

Swivel castor with total lock CDT 125 LEB

Transport Series CD - Wheel E

-20 °C - +70 °C

+++
swivels easily

+++
wear resistant

+++
shock proof

+++
floor protective

+++
weather proof

Wheel



Tread: Elastic solid rubber tyre, black, 73±5 Shore A, vulcanised on wheel centre

Wheel centre: Die-cast aluminium alloy

Fork



Finish: electro-zinc plated, double ball bearing – revited, hardened steel balls thermoplastic dust protection ring, wheel axle bolted, total lock

Swivel castor with total lock Wheel-Ø A x width B mm: 125x40

Load Capacity kg: 120

Load capacity tested according to EN 12530 and EN 12527

Overall height H mm: 154

Dimension of top plate TP 102x83 mm:

Hole spacing HS mm: 80x60

Hole-Ø HD mm: 9

Swivel radius SR mm: 108

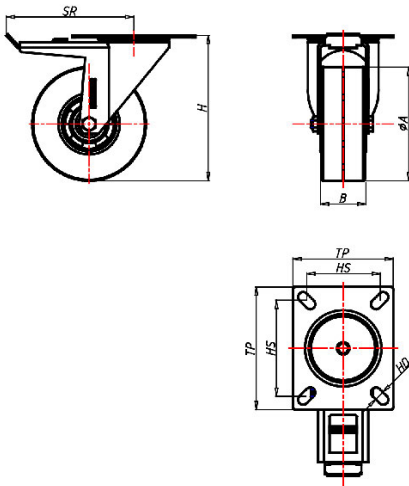
Wheel bearing: Roller bearing

Advantages

- ✓ excellent running performance
- ✓ very silent in motion
- ✓ low rolling resistance
- ✓ good abrasion resistance
- ✓ corrosion resistant
- ✓ non-marking in grey

©Copyright 2024 Rollenbau GmbH, www.rollenbau.at 20.05.2024

ROLLENBAU



Applications

- Bins
- Refuse bins
- Dollies
- Trash containers
- Refuse containers